

SPEX
Express Ltd

SPEX Express L.L.C

Company Profile



www.spexexps.com



00962799710001



Amman – Jordan Sweifieh Alwakalat Street

#SpexExps



/SpexExps



CONTENT

01. Our Team
02. Our Partners
03. Overview
04. Our Philosophy
05. Our Network
06. Vision & Mission
07. Services
08. Future Plans
09. Contact Us



Our profile sheds the light on our entity to lighten our strengths and represent the possible opportunities of future business partnerships.

في الواقع، إن شبابنا العربي أغلى ما نملك، ومفتاح مستقبل هذه المنطقة
وهذا العالم. إنهم في انتظاركم.... أصدقائي، بامتلاكنا هذه الثروة الهائلة،
ندركي نحن كدول هذه المنطقة، الحاجة إلى رعاية مواهبنا وشبابنا و تسخير
طاقاتهم، وعلينا بناء قدراتهم من خلال التعليم النوعي، و تمكينهم نحو النجاح.
جلالة الملك عبد الله الثاني بن الحسين

Logistics is a sensitive issue that affects directly Jordanian and the world economy. I've been striving on developing this sectors for years with the vision of building a Jordanian logistics company that competes on an international standard, because Jordan is the middle of the Middle East and should be the logistics hub by serving the Middle East region.



Eng. Mahmoud Al Khayyat
Co-Founder/ GM



Mahmoud N. Al Khayyat is one of the most knowledgeable and experienced logistics professionals and a consultant in TRC for courier sector.

IND Eng, CSCP, TQM, CS, Certified Sales Manager, DGR Certified, Coaching Certified, TUV Certified.



Our Team

Ahmad Bdour
Field Operations Manager

Bachelor degree in Mechanical Engineering. 6823years Major in the Jordanian Military – Arab Arm Force. 4 years of experience in logistics.



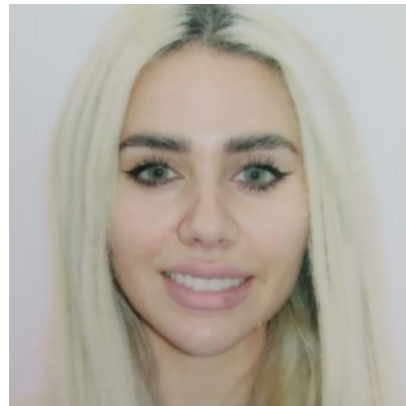
Eng. Mohammad N. Braik
Supply Chain and Logistics Director

ELE and MIS from The American University of Sharjah, EFQM, TQM, SEO, ASO, ToT, NLP, Procedure writer, Google Drive. 10 years in development, training, and OSA operations and TQM.



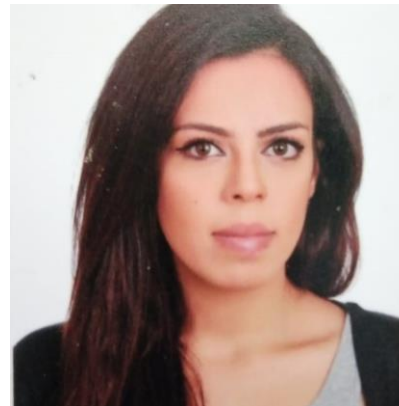
Maya Jaber
CS Manager

Bachelor Degree from California University in Philosophy and Social Studies, 3 years experience in customer service and logistics.



Raya Naimat
Chief Accountant

Bachelor Degree in Business Administration and 8 years experience logistics and customer service.





OUR CUSTOMERS
Are Our Business Partners



OUR CUSTOMERS
Are Our Business Partners

A photograph of three business professionals in a meeting. A man in a dark suit and blue tie is shaking hands with a woman in a light-colored blazer. Another woman with long dark hair is visible in the foreground, looking towards the man. They are seated at a table with documents, a blue mug, and a white mug. The image has a semi-transparent purple overlay.

OVERVIEW

SPEX vision targets being the best logistics partner in the region that provides a variety of services with the best quality.

Your Business Partner



WE PROVIDE

concrete and reliable courier and freight forwarding services for local and foreign companies operating in the region.



WE HAVE

innate advantages in administering courier & freight Solutions.



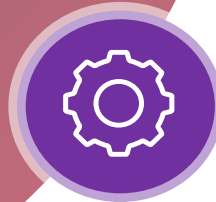
WE ARE

able and ready to meet your short and long term contract needs .



WE VALUE

your time and we are here to support our clients from our first meeting to the last day of work.



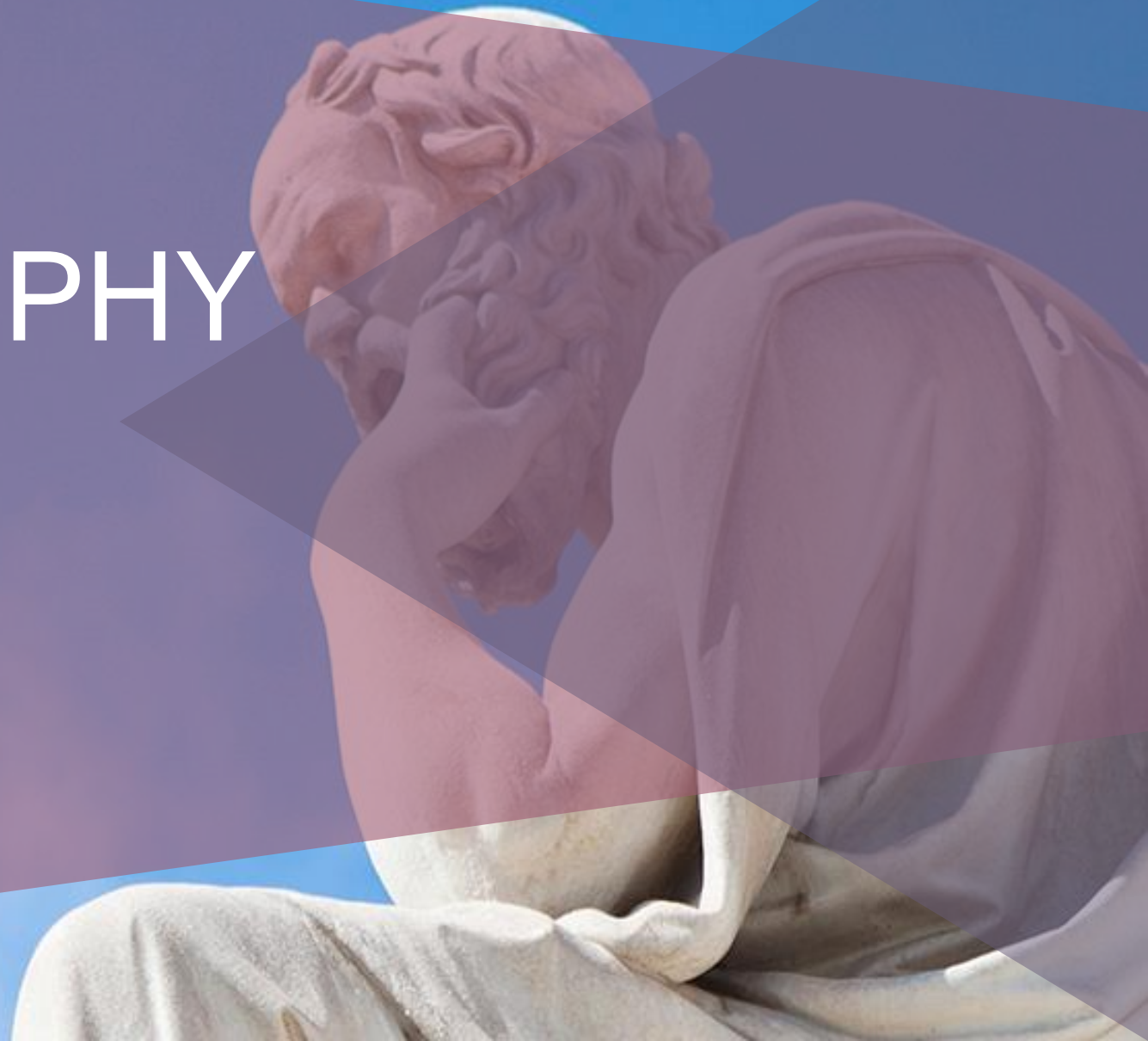
WE ADAPT

in a fast paced and work intensive business environment with a communication strategy that keeps a constant relay between managers, employees, and clients for which our team is informed and accountable.

OUR PHILOSOPHY

We are known for our demanding strive for excellence.

Your Business Partner



Our philosophy is to thrive for excellence and to provide competitive, efficient and reliable resource solutions.

A silhouette of a person in profile, looking out over a cityscape. The image is framed by a decorative border with a scalloped, organic shape. The background is a light blue sky with a cityscape visible at the bottom. The word "Excellence" is written in white text at the bottom center.

Excellence

MOTIVATION

The focal element of our philosophy is to establish trust and authenticity with our clients, making our motto.



INTIMACY

Client Servicing & Relationship,
We provide the best in terms
of quality, time, people
and price.





OUR NETWORK

Our good contacts and networks worldwide make us a reliable and resourceful courier & freight forwarding in the local and global market.

Your Business Partner

Wide Presence

Our wide presence in the market and shipping knowledge expertise had always been an asset to our customers as they believed that they are able to depend on us to provide them with our service for there shipments & logistics with a competitive price. **Spex** prides itself in being able to meet all the logistics needs of the customers.



Customers Needs



VARIETY OF SERVICES

One of our strengths is to provide a variation in our services that suite most of our customer needs with best quality and prices compared to our competitors.



EDUCATE OUR CUSTOMERS

We strive hard to educate our customers about their rights, procedures, and setups that best fits their business.



DEVELOPMENT IN SOLUTIONS

Our specialized Socio-Technical development team was chosen from the best education firms in the region with the diversity that ensures creativity and innovation. We have experts in Logistics, Engineering, Quality, MIS, Coaching and Management.



A person in a dark suit stands in a doorway, viewed from behind. They are holding a briefcase in their right hand. The scene is dimly lit, with light coming from the doorway, creating a silhouette effect. The background is a soft, hazy blue.

Don't Wait For Opportunities
Create it!

WHY SPEX?!



Working closely with customers to improve their performance and reduce costs.



Service quality assured and guaranteed.



Providing experienced and professional service.



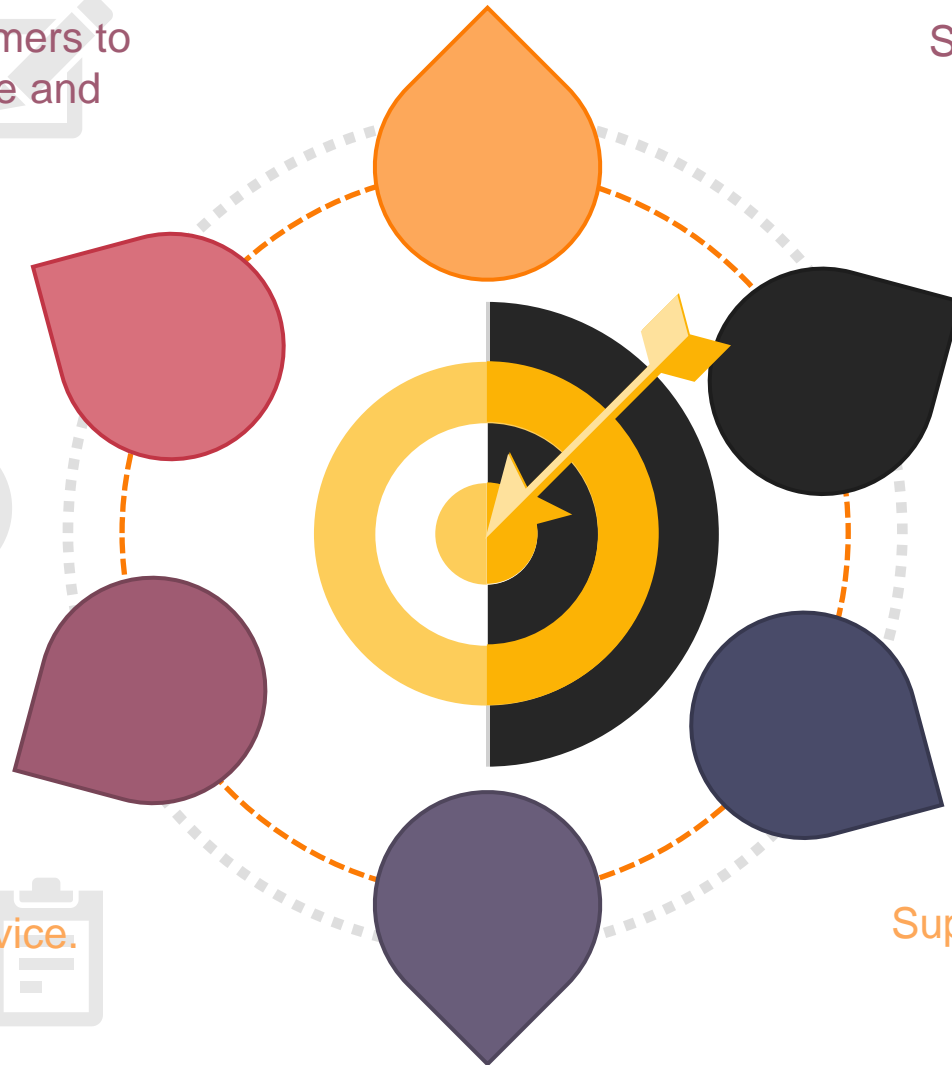
Direct link between providers, Suppliers and our customers.



Flexible and creative service.

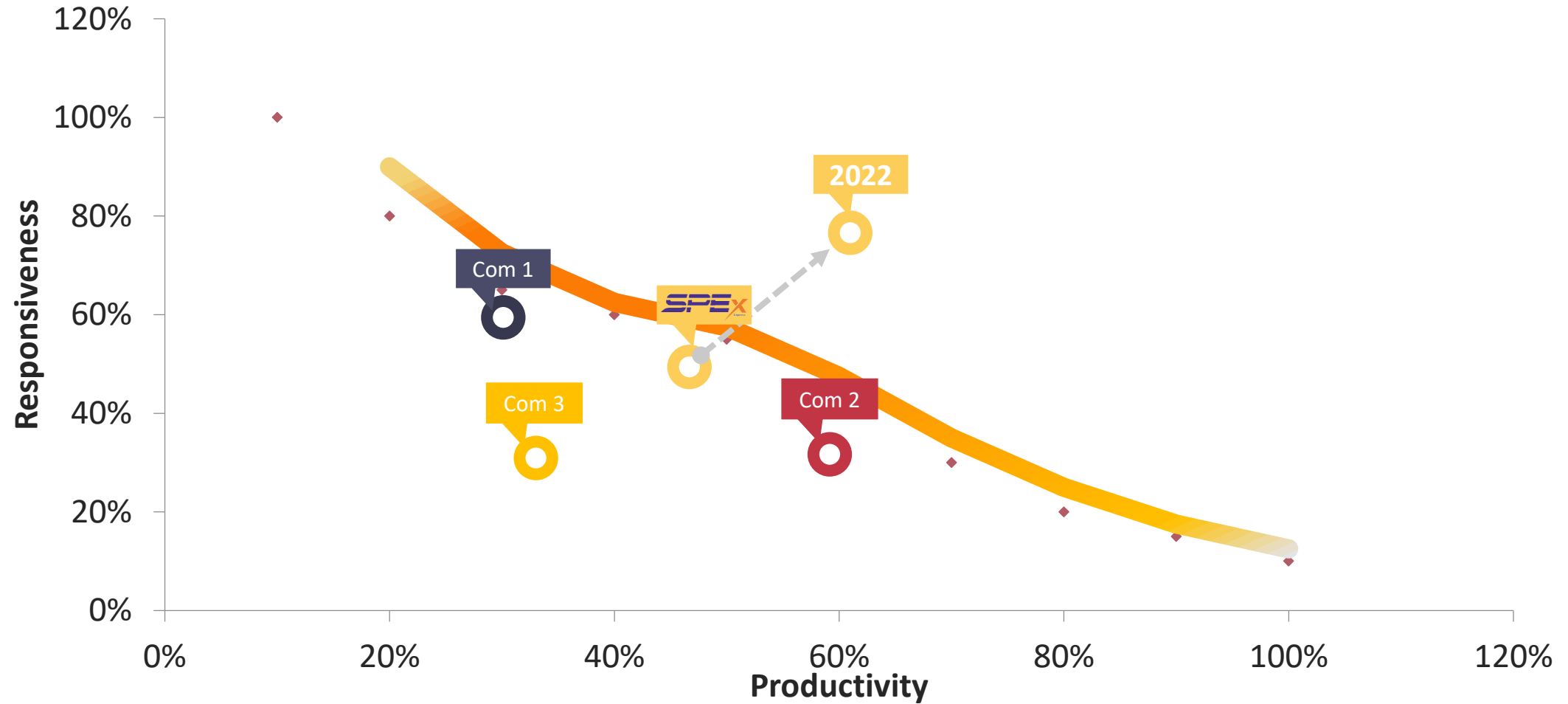


Supply chain management and shipping consolidation.



HOW WE COMPARE

This graph shows how SPEX compare in the market





Vision and Mission

Our team is all aligned to one vision to accomplish our mission that shall be achieved through continued effort in working closely with our providers and principals in ensuring that we are always kept abreast with new logistics services innovations and technology.

Your Business Partner

A hand is shown holding a dark circular frame, which acts as a magnifying glass or a window into a specific view. The view through the frame is a landscape with a river or valley winding through hills. The background of the entire image is a soft-focus landscape under a bright sky, possibly at sunrise or sunset, with a hand holding a similar frame in the foreground, creating a sense of depth and focus on the central vision.

Our vision is to be one of the big market leaders in the Logistics business providing a wide range of logistics services to our customers.

A group of people silhouetted against a sunset, with their arms raised in celebration. The scene is set on a beach or a similar outdoor location, with the sun low on the horizon, creating a warm, golden glow. The people are standing in a line, and their arms are raised high, suggesting a moment of triumph or joy. The overall mood is positive and energetic.

Mission

SPEX Express Company strive to be your preferred partner in the Logistics & supply chain in the communities where we operate. We combine economic success with social and environmental responsibility.

A hand in a suit jacket pointing forward, with several semi-transparent business icons overlaid: a star in a shield, a speech bubble, a wrench, a checklist, a building with arrows, a pie chart with a dollar sign, and a square with arrows.

SERVICES

Our entity provides variety of services that meet the best quality with the most affordable prices.

Your Business Partner

OUR SERVICES

DOMESTIC

Our Domestic Express offers reliable door to door solutions for time-critical packages to be delivered within Jordan.

FREIGHT

Our airfreight products encompass a complete range of advanced, high quality services provided globally

EXPRESS

We will provide a global solution for importing and exporting time-sensitive documents and parcels door-to-door from around the world that will meet our customer's needs

RELATED SERVICES

We provide logistics related services such as packaging, training, and business identity services



OUR SERVICES

Make Your Business Success

+100

ACTIVE
COURIERS

+20K

INT.
SHIPMENTS

95%

SUCCESS
DELIVERY %

+100K

DELIVERED
SHIPMENTS

24/7

CS SUPPORT

DOMESTIC SERVICES



Our Online Platform

Our online platform facilitates all our customer needs



Package Collect

Shipment are being picked from the suppliers upon request



Package Delivery

We offer next-business-day and same-day door-to-door delivery for your urgent domestic packages within Amman with a proof of delivery.



Cash on Delivery

We can deliver any product to our customers, collect the amount paid from the buyer, and then transfer the payment to our customer.



Return Service

Send items and receive them back to customer doorstep. Ideal solution for getting documents signed or sending products that require repair and return.

OUR ONLINE PLATFORM



75%

User Friendly

Our system is designed to be user friendly, we are currently developing our app for the best optimization.

99%

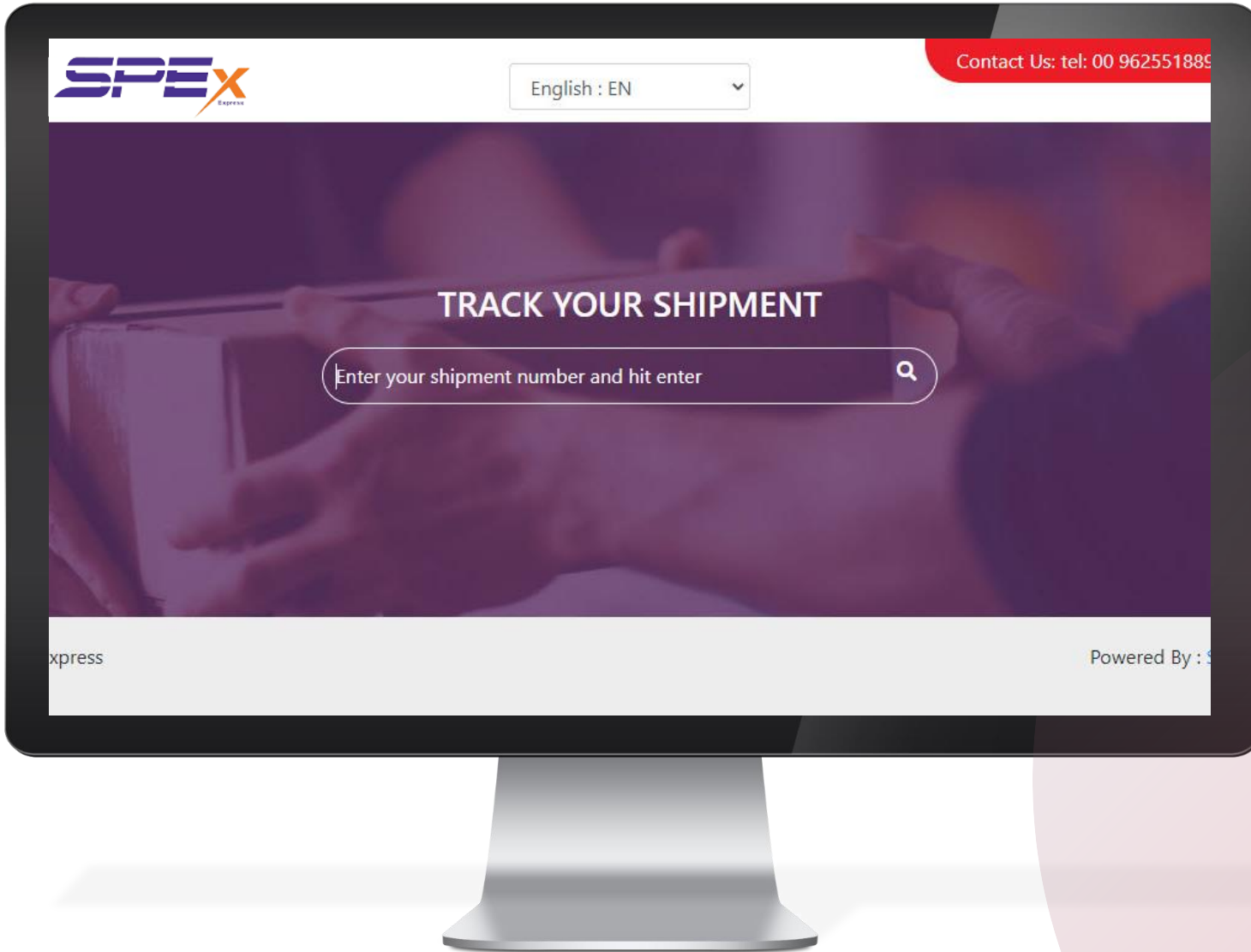
Direct Update

We provide direct updates about the shipments. Couriers assign the shipments to its final status on site.

99%

Accuracy and tasks

The data is accurate to provide the customers with full data about their shipments and finance status.



OUR ONLINE TRACKING SYSTEM

Pickup and tracking

We will pick up and deliver the packages within agreed delivery times with the ability to track your shipments online at any time, we will use our cars for Amman city limits and for remote areas.

24/7 SUPPORT



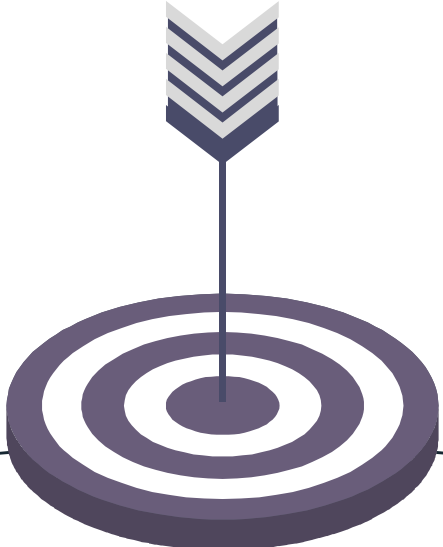
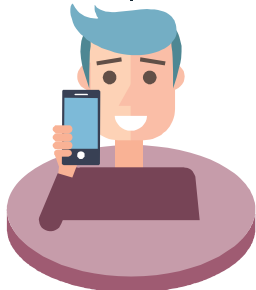
WHATSAPP

We provide 24 hours WHATSAPP support, our new system provides direct responses using automated bot.



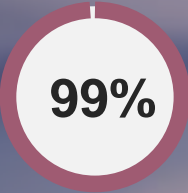
PHONE

Our professional customer service team is always available to attend to your calls during working hours 9-8pm



COMING SOON

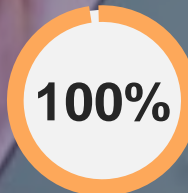
SPEX APP



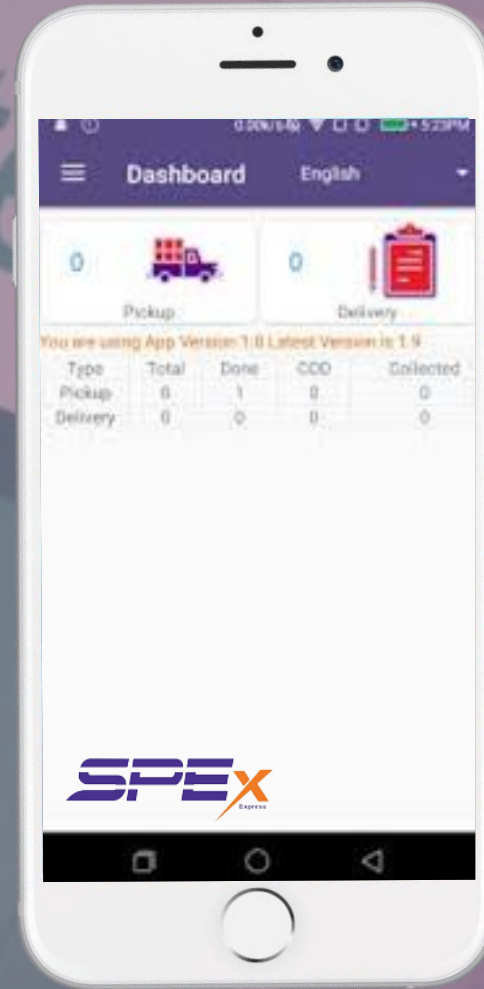
Easy To Use



Covering All Services



Responsiveness



OUR WAREHOUSE



Well Segmented 01

Our warehouse is well segmented to assure no shipments out of track

Future Automation 02

We have future plan to prepare and instruct the first full automated warehouse with humanoid robots

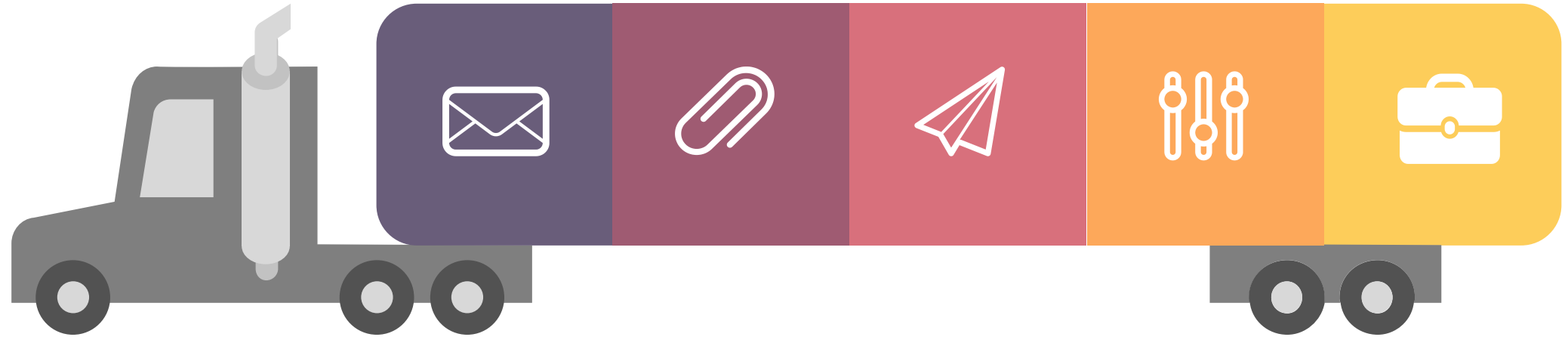
Assure Security 03

Our warehouse is secured with cameras and security systems that records and secures your shipments 24/7

Maintain Condition 04

If you're shipping products that need specific temperature or that might break, our warehouse is designed to keep your products safe.

ROAD FREIGHT



01

RELIABILITY

We provide reliable and fast road transport services throughout UAE and GCC and neighboring countries as well.

02

COST EFFECIENCY

We have some of the most cost-effective land transport solutions available, that ensure maximum efficient for our clients when it comes to delivering their products and services to their respective markets.

03

VARIETY

Door-to-door forwarding services by road are virtually available from any point to anywhere with-in the middle-east.

AIR FREIGHT

Our airfreight products encompass a complete range of advanced, high quality services provided globally.

01- 6 Years of Experience

Our experience in scheduling and clearance procedures combined with our network of offices and selection of premium airfreight carriers, affords maximum presence with optimum connections thus enabling our customers to save time and money.

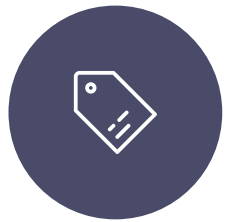
02- Meeting customer requirements

This is a result of analyzing our customer's requirements permanently and developing products/ services to suit their needs. We offer both Priority and Economy Services, Groupage, Sea /Air Multimodal and Charter Services, in addition to our Door to Door Services , Our Network of agents give us access to worldwide stations and make it for our customers a one stop shop solution.



SEA FREIGHT

Whether it's Full Container Loads (FCL), Less Than Container Loads (LCL), import or export, consolidated or project cargo – whatever your requirements may be, we will provide comprehensive ocean freight forwarding services. Backed by our relations & network of freight forwarders and key shipping lines, our ocean freight services will take care of your cargo through the entire shipping cycle, from collection to the delivery to the ultimate consignees.



FCL & LCL to and from all major markets



Container stripping / break bulk



Full documentation service



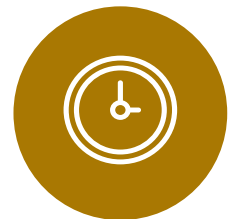
Customs Clearance and Door Delivery



Full customs brokerage service



Real time information systems and Product insurance programs



EXPORT EXPRESS



PRIORITY EXPRESS

We will Ship urgent packages around the world through Priority Express. Documents or parcels will be carefully packed, swiftly shipped and attentively cleared through customs to arrive on time to any global destination.



SAVING EXPRESS

For less urgent heavy packages, we will offer Eco Express, a time-definite delivery solution that enables customer to ship and send packages around the world at more economical rates than Priority Express.



MUST PROVIDE

- Online Shipping and real-time tracking updates.
- Proof of Delivery.
- Delivery notifications via e-mail and SMS.
- Customs clearance and a wide range of non-standard export and Clearance services.



Online Importing

We will offer our customers a smart tools to track your imports, and tools to import packages from customer global suppliers by contact us.



Priority Import Express

door-to-door solution for your urgent packages.



Eco Import Express

For less urgent shipments, Eco Import Express is a cost-efficient delivery alternative that balances a great price with a longer delivery time.

IMPORT EXPRESS

We will provide a global solution for importing time-sensitive documents and parcels door-to-door from around the world that will meet our customer's needs.



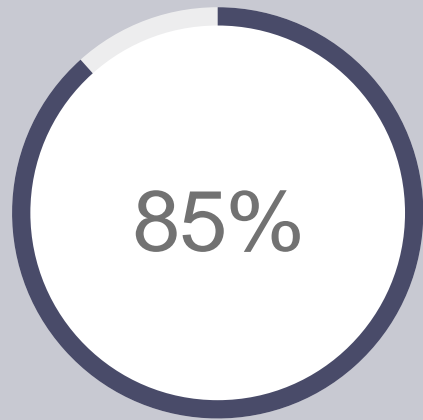
FUTURE PLANS

We have set our future plans to raise the frontier diagram of the logistics sector and to create new competitive advantage that will raise the base of competition

Your Business Partner

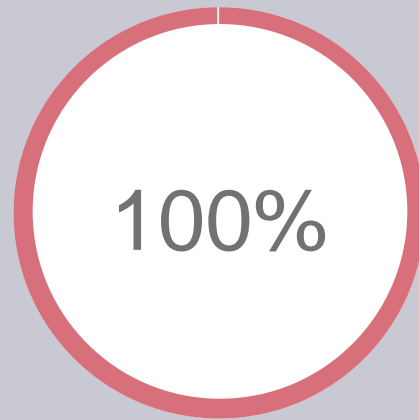
OUR FUTURE GOALS

Your Business Slogan Here



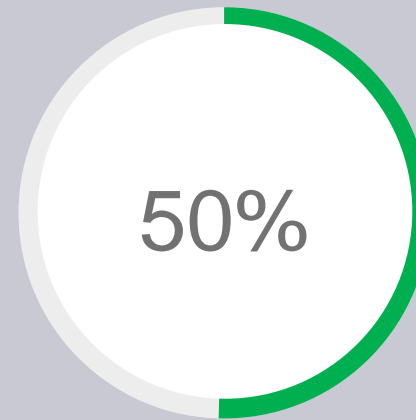
AUTOMATION & TECHNOLOGY

Our entity is the first socio-technical logistics firm that has a special investment program in technology that raises accuracy, intimacy, and efficiency



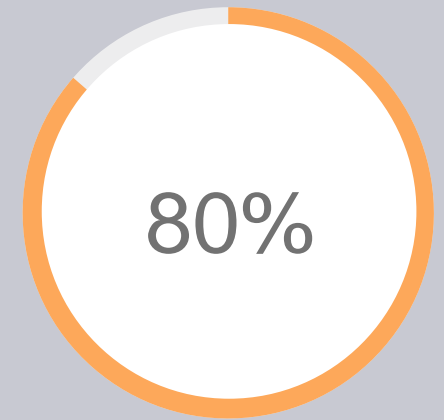
RESPONSIVENESS & PRODUCTIVITY

Maintaining a good responsiveness, productivity, and cost rate has been always the biggest tradeoff in the logistics market, our future plan includes raising the responsiveness to 100% to improve the market frontier in Jordan



GREEN & SOCIAL RESPONSIBILTY

Green is one main part of our vision, our social responsibility initiations encounter education, environment, and voluntary work



QUALITY & EXCELLENCE

We are currently tracking our internal initiations to achieve great scores of excellence. Tracing our enablers and results is done through a qualified team led by certified EFQM assessors to apply for Excellence Awards

CAN WE DELIVER TO SPACE?!



CREATIVITY & INNOVATION



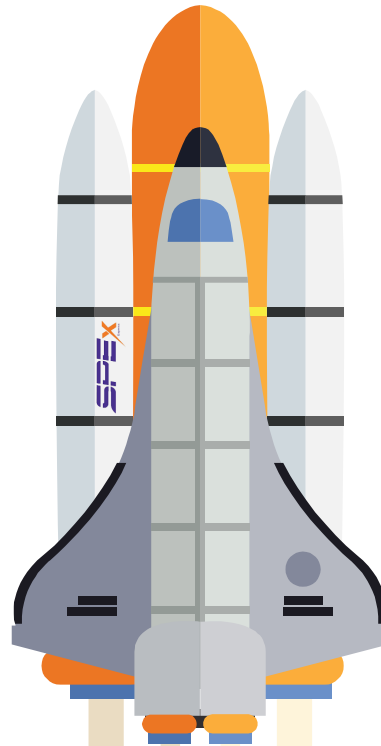
We have set the key elements needed to foster innovation and creativity, through workshops, implementation, and ongoing development



HARD WORK & DISCIPLINE



Our employees loyalty and intimacy builds our core motto of discipline and hard work.



EDUCATION & KNOWLEDGE TRANSFER



Education is one of the key elements that manage the development cycle we have a clear plan how to educate and transfer the knowledge internally and externally

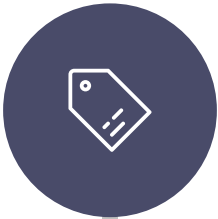


TRAINING & EMPOWERMENT



Empowering our employees by professional training and clear instructions to take right decisions to raise productivity.

AUTOMATION & ROBOTICS



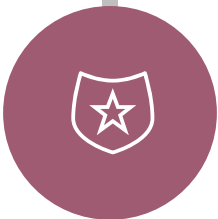
Investment Objectives

Our professional team will study the technological needs and brainstorm the ideas to reach to the best decision that matches



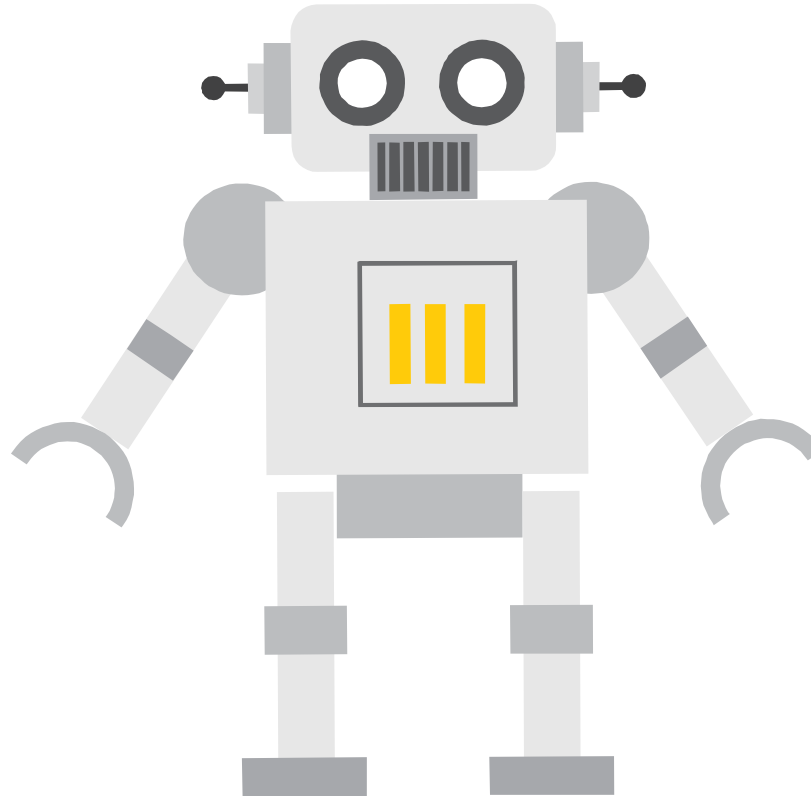
Remote Agents

Remote agents are one of our key factors to enhance productivity and overcome the productivity VS responsiveness tradeoff



Customized System

Owning a customized system that attends to every need of our customers will eventually boost our performance



Humanoid Robot Investment

Our investment in humanoid robots is a major key to accomplish our objectives



Smart Warehouse

Our warehouse ability and infrastructure to foster the development cycle of supply chain



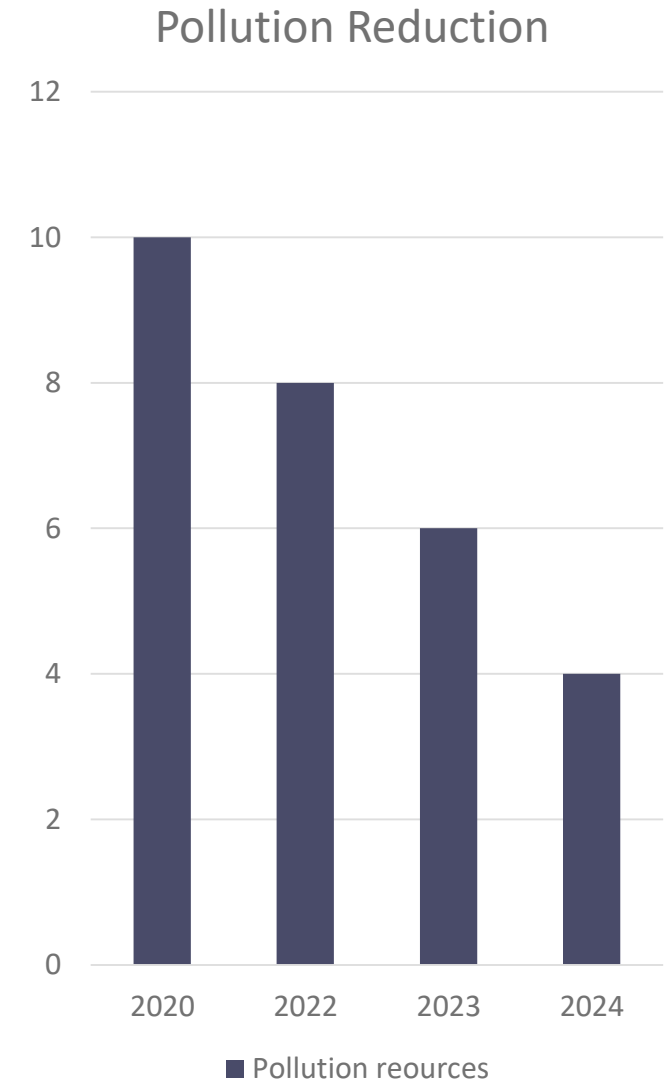
User Friendly App

Our customers ability to accomplish all the transactions through a single app



Build a better environment for our kids

We Care!!





IF EVERYONE IS MOVING
FORWARD TOGETHER THEN
SUCCESSION TAKES CARE OF ITS SELF

SPEX TEAM

SPEX ACADEMY



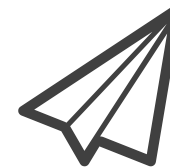
Virtual and Face to Face
Training & Coaching

In our academy we use MOOC strategy to manage reaching to the biggest number of beneficiaries.



Free/Premium
Flexible Revenue Model

The flexible revenue and business model will allow all people intending to learn to opt in to our learning platform.



Start Up
Consultancy and aids

Our academy will foster and aid initiations and startups to enhance Jordan's economy.

MOOC

Minimum MOOC Expectations

5

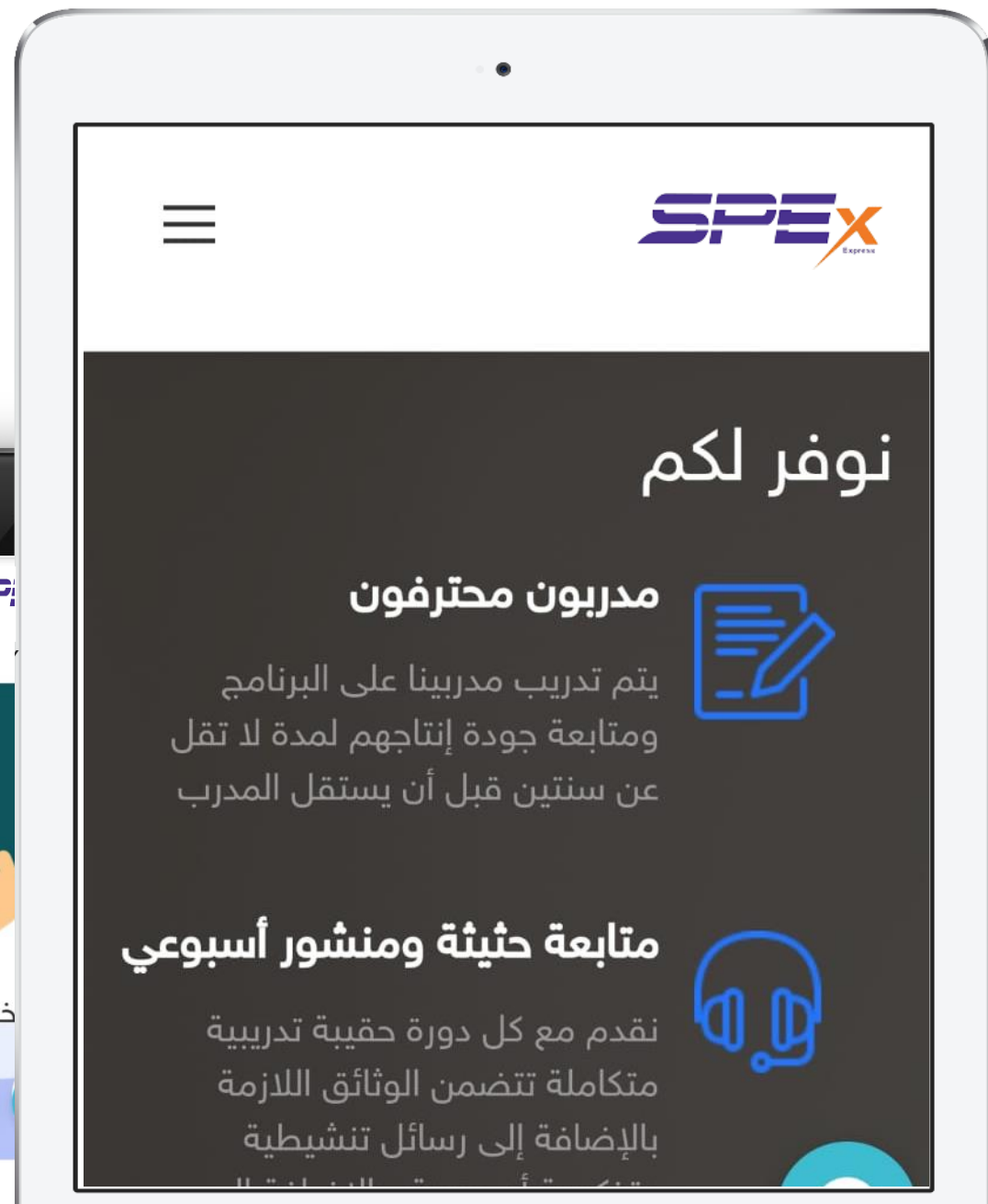
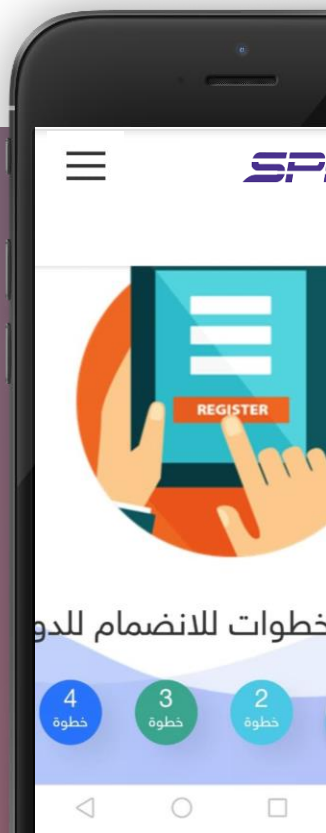
Specializations

500

Media files

20K

Students



نوفر لكم

مدرّبون محترفون

يتم تدريب مدرّبينا على البرنامج ومتابعة جودة إنتاجهم لمدة لا تقل عن سنتين قبل أن يستقل المدرّب



متابعة حيثة ومنشور أسبوعي

نقدم مع كل دورة حقيبة تدريبية متكاملة تتضمن الوثائق اللازمة بالإضافة إلى رسائل تنشيطية





Excellence Plan

Your Partnership Is Our Trail to Excellence



2021

Setup Enablers & Plan

2021-2024



Trace Results & Train

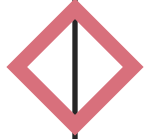
2021-2024



- ✓ RADAR
- ✓ FEED BACK



2024



Apply to Awards



Award Winning Company

CONTACT

We will consider your communication highly appreciated, our on call team will forward you to the concerned person.



Contact



Sweifieh Wakalat Street



Open: 9am – 8pm



info@spexeps.com



+962799710001

The cover features a light blue background with a large, upward-pointing bar chart. A person in a dark suit is running across the top of the bars. A large, dark purple diamond shape is centered on the chart, containing the text 'SPEX EXPRESS' and '2021'. To the right of the diamond is a cluster of small, colorful squares in shades of red, orange, and yellow. A white diagonal line runs from the bottom left to the top right, passing through the diamond.

SPEX EXPRESS

2021